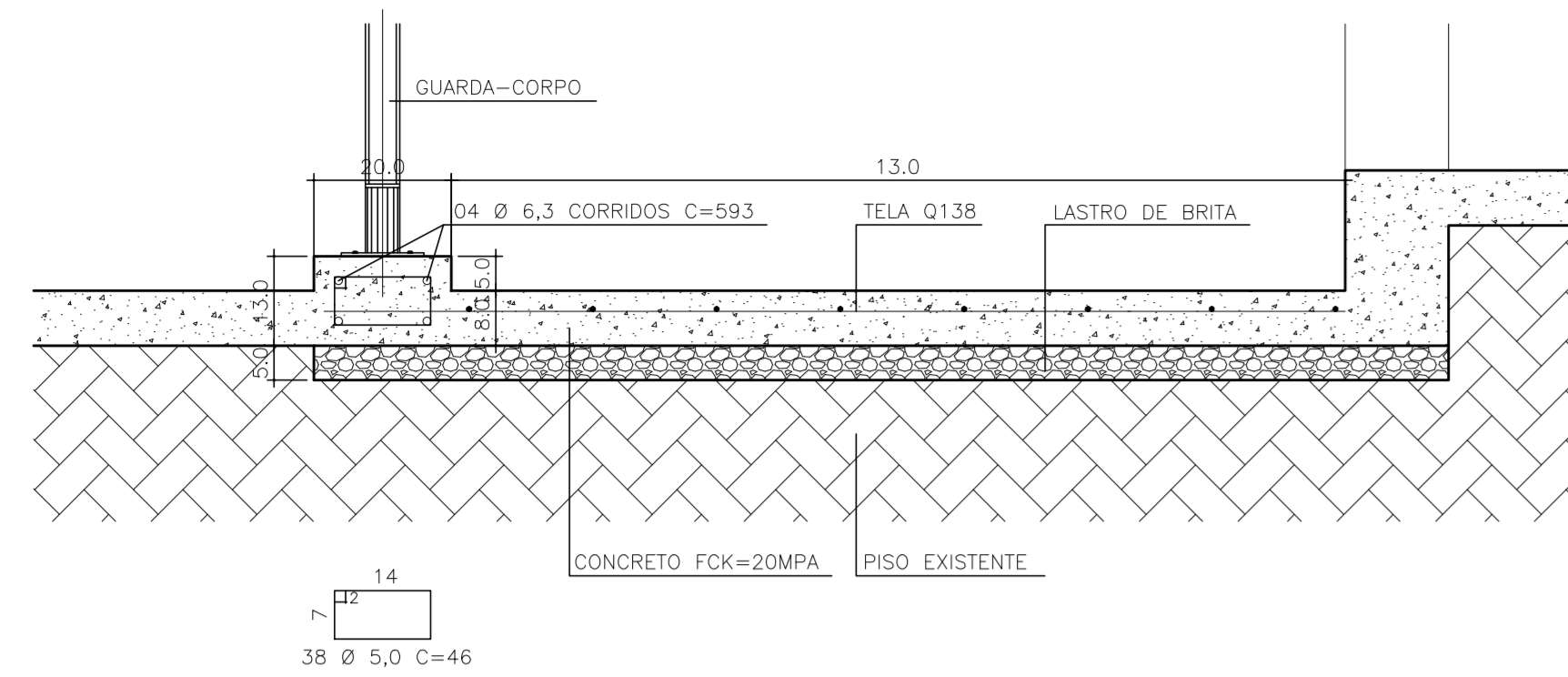
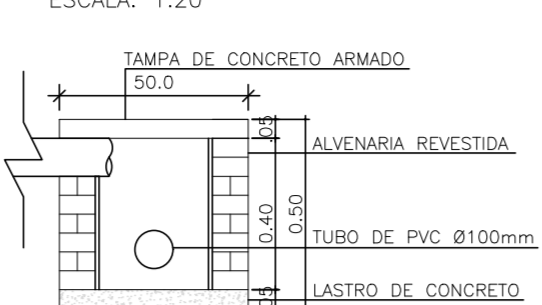


**DETALHE 03**  
**GUIA DE BALIZAMENTO EM RAMPA**  
**PISO ARMADO – FUNDAÇÃO DIRETA**  
 ESCALA 1:10

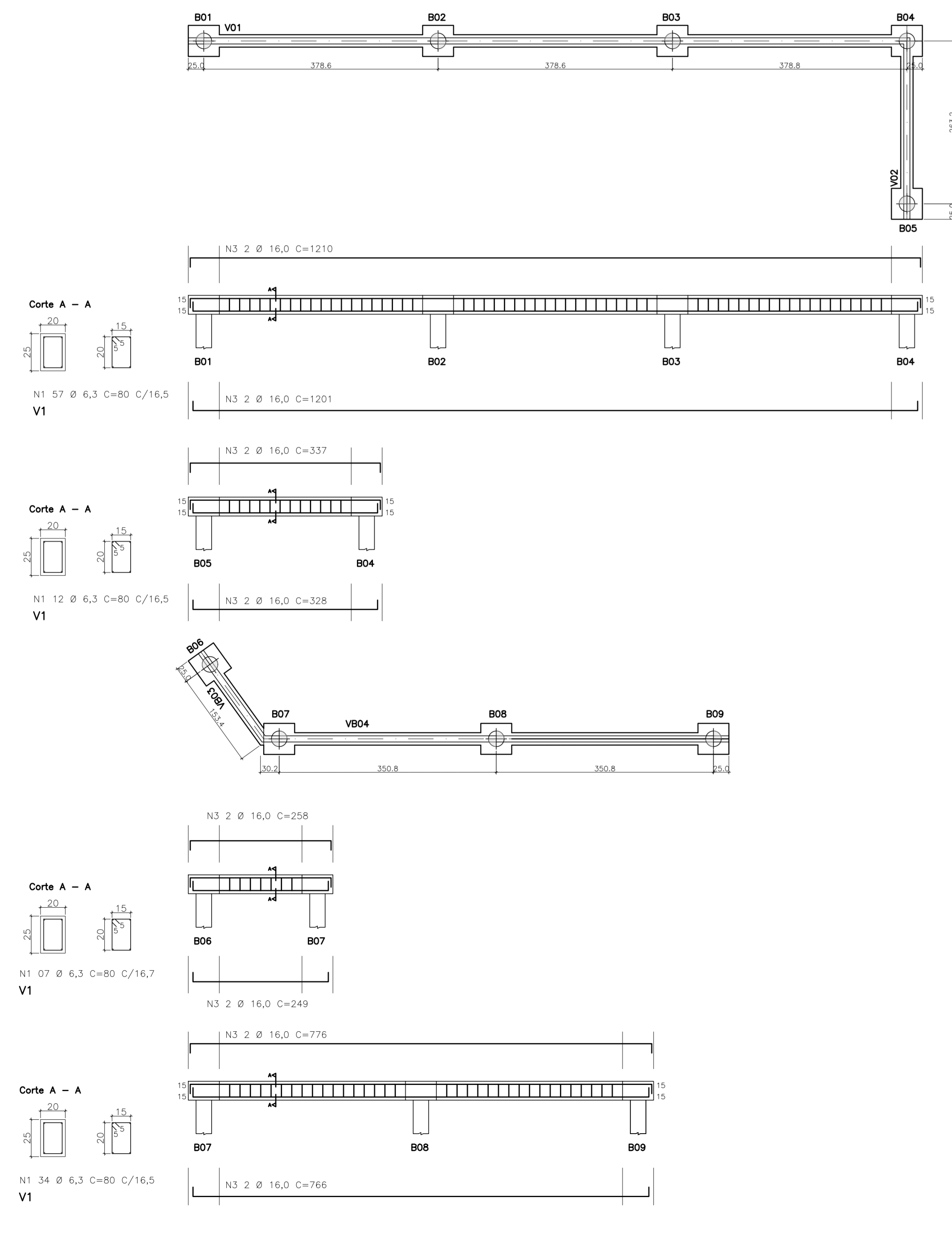


**DETALHE 4 – CAIXA DE LIGAÇÃO**  
 ESCALA: 1:20

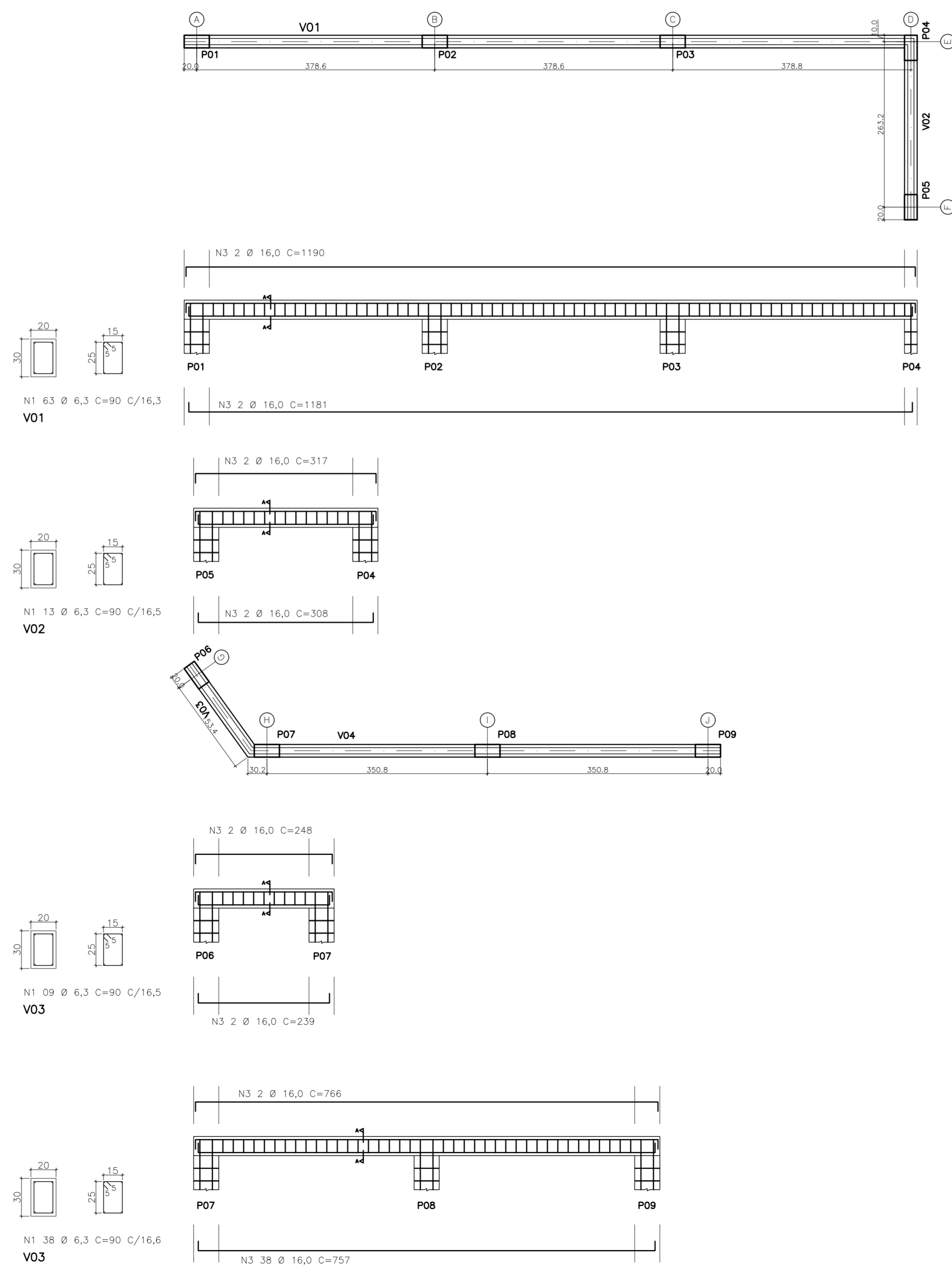


**PROJETO ESTRUTURAL**

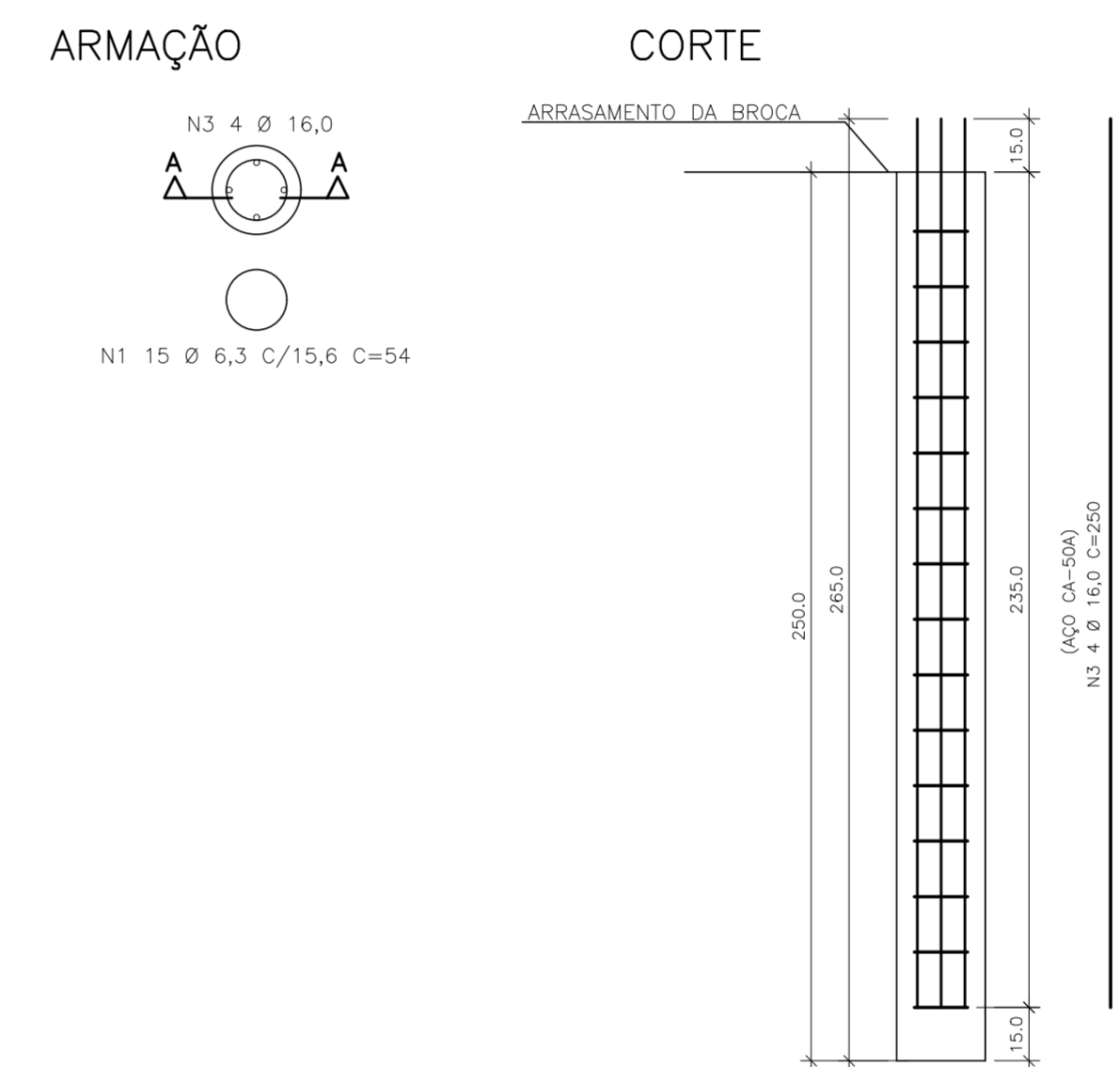
**VIGAS BALDRAMES**  
 ESCALA 1:50



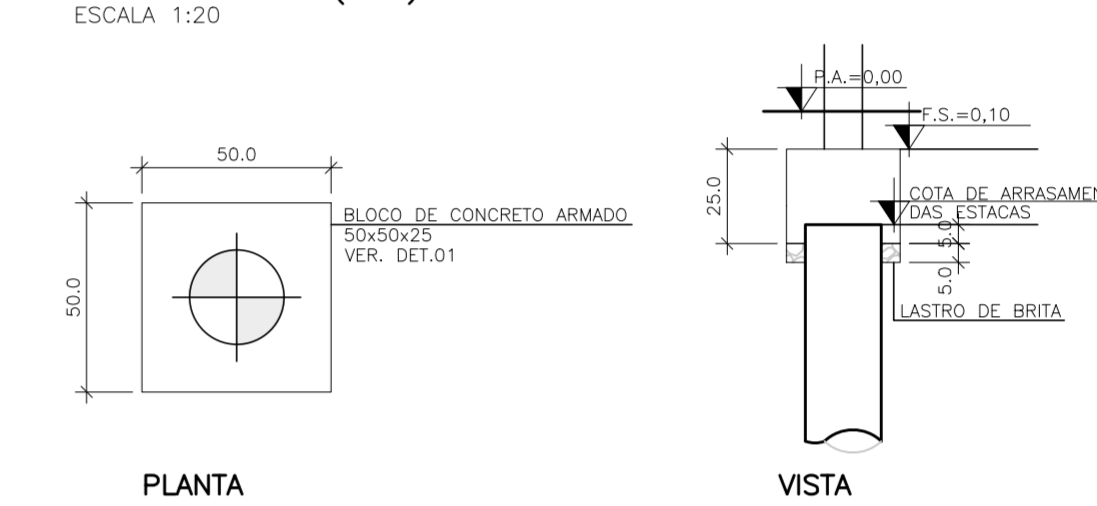
**VIGAS SUPERIORES**  
 ESCALA 1:50



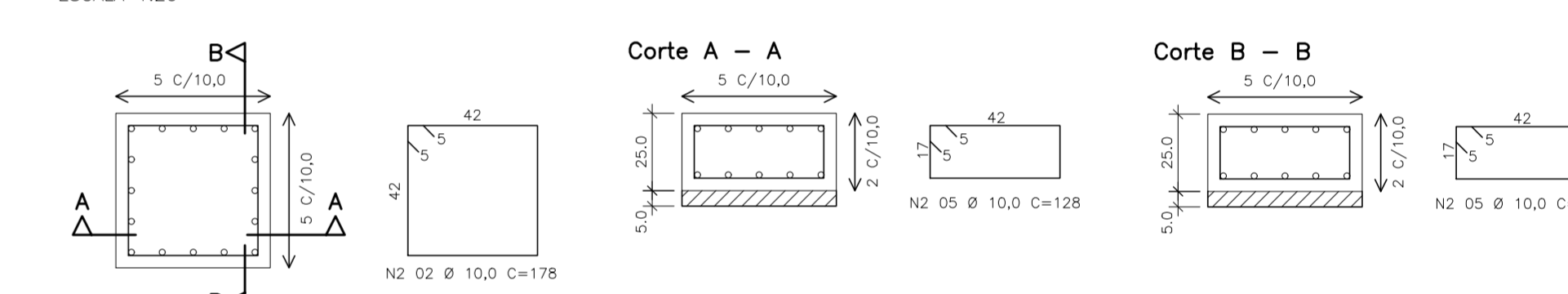
**BROCAS Ø 25 (9X)**  
 ESCALA 1:20



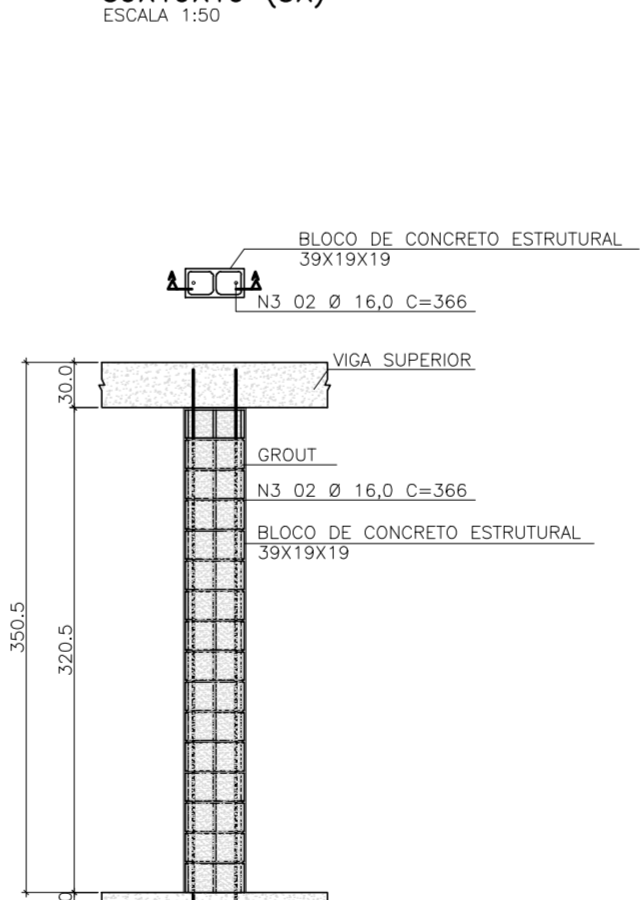
**SAPATAS 50x50x25 (9X)**  
 ESCALA 1:20



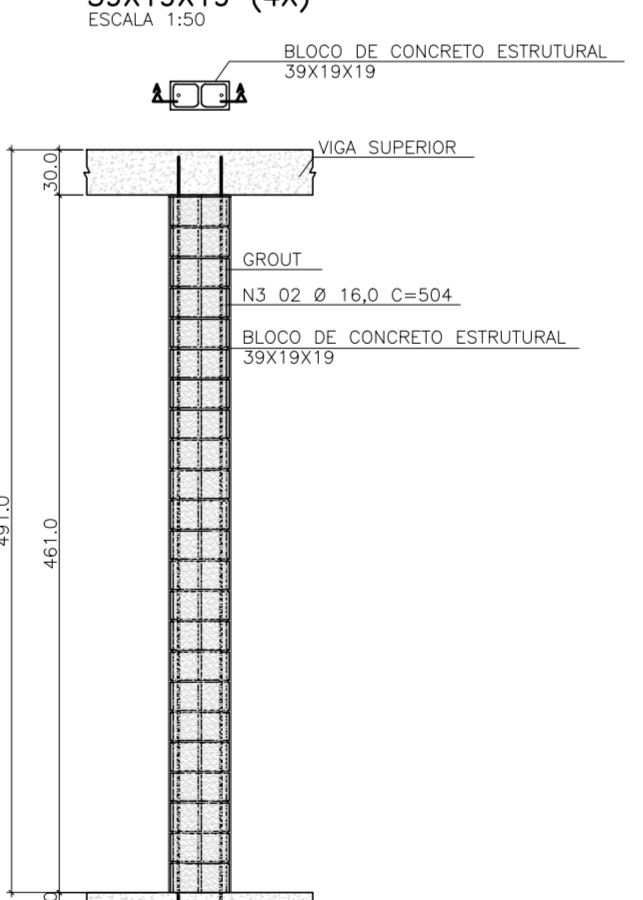
**DETALHE 01 – ARMAÇÃO DO BLOCO**  
 ESCALA 1:20



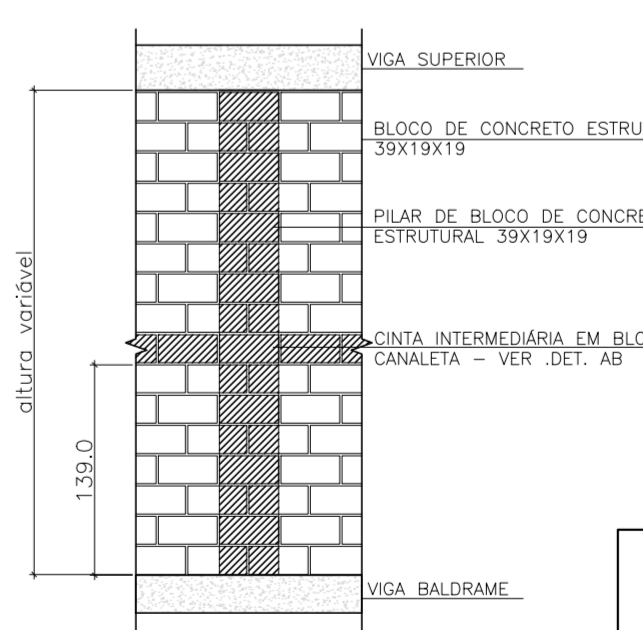
**PILAR (BLOCO DE CONCRETO ESTRUTURAL) 39X19X19 (5X)**  
 ESCALA 1:50



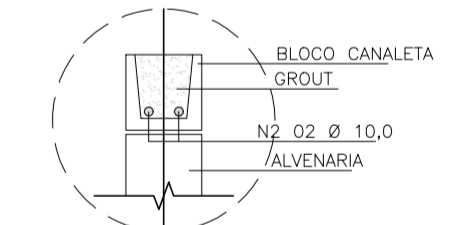
**PILAR (BLOCO DE CONCRETO ESTRUTURAL) 39X19X19 (4X)**  
 ESCALA 1:50



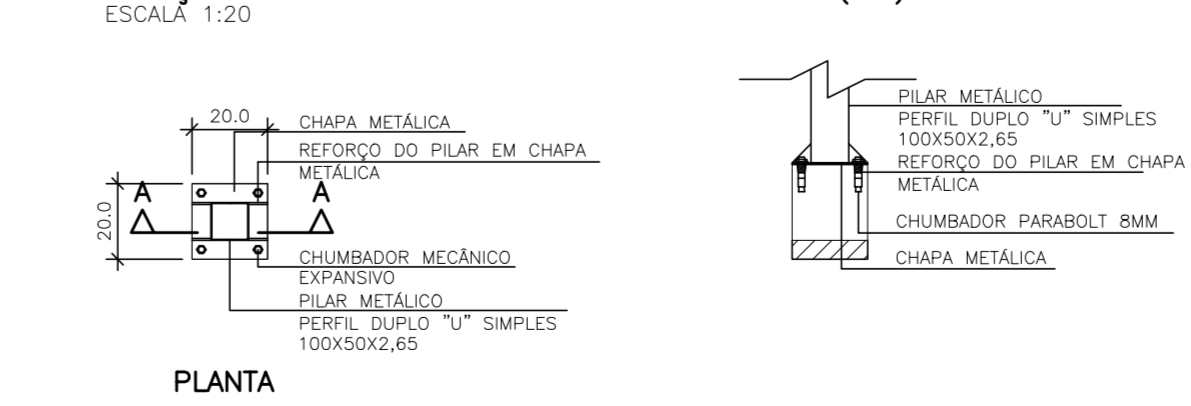
**ELEVAÇÃO 01**  
 ESCALA 1:50



**DET.AB: ARMAÇÃO DE BLOCO CANALETA**  
 ESC.: 1:20



**FIXAÇÃO DO PILAR-ESTRUTURA METÁLICA (2X)**  
 ESCALA 1:20



<b>PROJETO COMPLETO</b>		FOLHA 03/03	
 <b>PREFEITURA MUNICIPAL DE RIO GRANDE DA SERRA</b> ESTADO DE SÃO PAULO AV. DOM PEDRO I N°10 – FONE 0XX11 2770-0172			
OBJETO AMPLIAÇÃO UNIDADE BÁSICA DE SAÚDE CENTRAL VEREADOR AVELINO VALÉRIO SOBRINHO		PREFEITA MUNICIPAL MARIA DA PENHA AGAZZI FUMAGALLI	
LOCAL RUA PREFEITO CIDO FRANCO N°500 VILA ARNOUD RIO GRANDE DA SERRA – SP		SECRETÁRIA MUNICIPAL DE OBRAS E PLANEJAMENTO PRISCILA ULIAN DE OLIVEIRA CREA: 5070733693	
REVISÃO 00	DATA DEZ/22	ESCALA INDICADA	CREA: 5070733693